

## Ran

**Catalog Number:** 21097

**Gene Symbol:** RAN

**Description:** Anti-Ran Rabbit Polyclonal Antibody

**Background:** Ran (Ras-related nuclear protein) is a member of the Ras-superfamily GTPases. Ran is involved in the transport of proteins across the nuclear envelope, as well as in microtubule organization during mitosis.

**Immunogen:** A synthetic peptide from the C-terminal region of human Ran

**Tested Applications:** ELISA, WB, IHC

**Recommended Dilutions:**

ELISA: 1:1000-1:5000

WB: 1:100-1:2000

IHC: 1:100-1:1000

**Concentration:** 0.2 mg/ml

**Host:** Rabbit

**Clonality:** Polyclonal

**Purity:** Purified from antisera

**Format:** Liquid

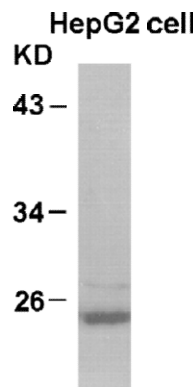
**Preservative:** No

**Constituents:** PBS (without  $Mg^{2+}$  and  $Ca^{2+}$ ), pH 7.4, 150 mM NaCl, 50% glycerol

**Species Reactivity:** Anti-Ran antibody recognizes Ran of vertebrates.

**Storage Conditions:** Store at  $-20^{\circ}C$ . Avoid freeze / thaw cycles

### Western blot:



WB: anti-Ran pAb

### Western blot analysis of Ran proteins.

Whole-cell lysate of HepG2 cells was used for western blots with the polyclonal anti-Ran antibody (Cat. # 21097).

FOR RESEARCH USE ONLY. NOT FOR DIAGNOSTIC APPLICATIONS